



Excel **group**

www.excelgroup.co.in



[in](#) [f](#) [t](#) [@](#) /excelgroup

Chairman Message

EXCELLENCE DEFINES US..!!

Greetings to my Excel Family and our Esteemed Partners, As we begin a new chapter with the turn of the year 2024, I reflect on the remarkable journey that Excel Group of Companies has undertaken. In the spirit of Advantage Excel, our commitment to excellence, innovation, and integrity continues to be the guiding force propelling us forward.

EXCEL GROUP: The Excel Group of Companies has diversified its footprint, venturing into an array of industries. From Job portals (Beats Jobs), Cooling Energy Systems (Excel Energy), Infrastructure (Excel Infra), Luxury transportation (Excel Travels), Tour & Event organizers (Zeal Tours & Events), Trading (MD IMPEX), Industrial Fabrication (Sri Balaji Engineering), Agriculture and Farming (Excel Agro), to a Multispeciality Hospital (Excel Healthcare) – our portfolio reflects innovation, resilience, and a Commitment towards Excellence.

EXCEL MARITIME: Navigating Beyond Horizons for over two decades, Excel Maritime has been a stalwart in the realms of Taxation, Shipping, and Logistics. Our journey, marked by expertise in EXIM legal services, customs and DGFT-related activities, Clearing and Forwarding, Freight Forwarding (Sea & Air), and comprehensive Transportation solutions Chartering (Sea & Air); Vessel Handling & Stevedoring, has laid a solid foundation. Fueled by our core values of hard work, integrity, and efficiency, Excel Maritime has witnessed substantial growth, a testimony to our dynamic leadership and the commitment of our exceptional team.

Paving the Way to New Horizons: Our strategic plan propels us to not only explore new business ventures annually but to excel in their operations, setting unparalleled standards. We stand to provide dedicated, exceptional & quality services at your door step delivery with an optimized cost solution as Your Success is our Priority.

VISION 2025: Soaring to New Heights As we chart our course towards VISION 2025, we are not merely seeking success; we aim to redefine it. Excel Group is positioning itself to be a leader, leaving an indelible mark on a global scale. Your unchanging support has been our driving force, and together, we shall reach unprecedented heights.

Join us in seizing opportunities, fostering growth, and celebrating collective achievements as we collaborate to establish a lasting legacy.

Welcome on board..!!
Co-Passenger - MMM

PDG. AKS. Rtn. Er. Muruganandam M

B.E., M.B.A., M.S., MFT., PGDMM., DEM

Chartered Engineer

Chairman & MD - Excel Group of Companies

Rotary International Director (2025 - 27)

Governor (2016-17) - Rotary International District 3000



Excel group

Excel maritime

Excel energy
Process Cooling Systems

excel travels

EXCEL INFRA
Design Your Dream

beats jobs
Your Success Our Priority

Zeal tne
Tours & Events

MD IMPEX
SERVICES

S
SRI BALAJI
ENGINEERING

Excel Agro

Excel HealthCare

About Excel Group

Our passion for new initiatives, commitment to quality, emphasis on ethical business practices and preference for long term business partnerships, has enabled us to not only create world-class businesses, but also become one of India's most respected enterprises. Excel Group Portfolio includes

- Exim Legal & Taxation
- Shipping & Logistics
- Construction & Fabrication
- Human Resource & Job Portal
- Tours & Travels
- Energy & Refrigeration
- Healthcare & Agriculture
- Finance and Trading

Social Responsibility

In parallel, we work for Community Development through our CSR wing "THE EXCEL FOUNDATION" which focuses on Education, Health, Youth, and Women & Girl Child Empowerment.

Vision

Globalization of **Excel Group**

Mission

Maintain the service **EXCELLENCY** with Time bound & Cost control through continual improvement with all levels of employees.

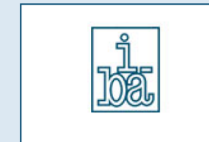
Values

- E – Care for the **Environment**
- X – Going the **Extra Mile**
- C – **Commitment** is most Important
- E – Working towards **Excellence**
- L – **Leadership** through Learning

View Certificates



Accreditations



EXCEL Maritime

Your Multi-Modal Logistics Partner

CHA Lic. No: CHN/R-74

AEO No: INAABCE7360F0F197



EXCEL MARITIME & LOGISTICS is a One-Stop shop for a whole range of EXIM services. We are an integrated / comprehensive service provider cum customer-focused organization. We undertake Turnkey Project Services and also Consultancy Services with lots of constant innovation and consistent value addition for our clients which create Benchmarks of Quality and Professionalism.

Awards & Recognitions

- Best Navigator Award by Times Group
- Customs House Agent of the Year Award by South East - Cargo & Logistics Awards
- Project Cargo Mover of the Year Award by South East - Cargo & Logistics Awards
- Most Promising Clearing & Forwarding Companies by Silicon India
- Freight Forwarder of the Year by South East - Cargo & Logistics Awards
- Customs Broker of the Year by South East - Cargo & Logistics Awards
- Project Cargo mover of the Year (India/International) by South East - Cargo & Logistics Awards

AEO CERTIFIED Customs House Agent (CHA)



SEA - AIR - ROAD - RAIL

We hold a valid CHA Licence (CHN/R-74) & expertise in clearing cargo across India (Sea/Airports & ICDs).

We Clear

General & Reefer Cargo
Break-Bulk & Project Cargo
ODC - Flat Racks, Open Tops & Mafi
SEZ / EOU Clearance

Our Specialisation

Second Hand Machinery
SVB Bill | DEEC / EPCG Bill | Re-Import & Re-Export
Project Import | Specialist in handling of 3PL & 4PL
Implementing 5PL concept

Taxation & EXIM Consultancy

Liaisoning with the Ministries of Defense, Non-Renewable Energy, Petroleum & Chemicals, Shipping, Finance, Telecommunication, and Commerce & Industry; also Customs, GST Cell, etc., as well.

LICENCE SCHEMES – Exemption and Remission

- Advance Authorization Scheme (Norms & No Norms)
- Ratification of Advance License (ALC)
- Revalidation | Invalidation | Clubbing
- Duty Free Import Authorization Scheme (DFIA) Export
- Promotion Capital Goods Scheme (EPCG)
- Post Export EPCG Duty Credit Scrip
- Export Obligation | Extension
- Restricted License (Including NOC for Specific Cargo)
- SCOMET

PROMOTIONAL / REWARDS / INCENTIVE SCHEMES

- Remission of Duties and Taxes on Export Products (RoDTEP)
- Rebate of State and Central Levies and Taxes (RoSCTL)
- MEIS | SEIS | TMA | Export House Certificates
- Free Sale Commerce Certificate | Interest Equalisation Scheme (IES)

VALUE ADDED SERVICES - DGFT

- SIMS | NFMIMS | PIMS | CHIMS
- MNRE (Ministry of Non-Renewable Energy)
- SEZ | EOUE | STP | EHTP | BTP Related

- **Committee Cases:** PRC | PIC | EPCG | Grievance
- IEC – New, Updation & Modification | DEL Removal

CUSTOMS REFUNDS

- Drawback Claims - All Industry Rate; Brand Rate & Vendor DBK Claims
- ITC | IGST Claims

VALUE ADDED SERVICES – CUSTOMS

- Special Valuation Branch (SVB) | Authorised Economic Operation (AEO – T1, T2, T3 & LO)
- Import of Goods Concessional Rate (IGCR) | MOOWR Scheme
- BG Bond Cancellation | TRA
- **ALL KIND OF REGISTRATIONS:** AD Code; ICE GATE; Project Import; Self Seal & LUT

OTHER SERVICES

- Registration with All Export Promotion Councils (RCMC)
- Certificate of Origin (COO) – EIA; DGFT & Chamber
- Industrial Entrepreneurs' Memorandum (IEM)
- LMPC | WPC | BIS | EPR | B&B Certificates
- PQ | FSSAI | Fumigation Certificates
- Digital Key (DGFT | ICE Gate | Individual)
- Chartered Engineer | Chartered Accountant Certification
- Container | Cargo Survey
- Appeals | Adjudication | SCN | Personal Hearing & Tribunal Proceedings

Project Logistics

FFFAI | FIATA | WCA



Our Project Logistics Process

Risk Assessment and Compliance Management
Transport Engineering | Route Survey
Heavy Lifting Services | Chartering Services



We are the most reliable logistics partner, capable of handling even the most complicated and large-scale projects. Expertise in handling any size, scope, and ability to deliver cargo in any Incoterms (EXW to DDP) on schedule and every time, along with cost optimization for all project logistics needs.

Industries we deal with

Paper & Pulp, Power & Energy, Automobiles, Cement, Sugar, Wind Mill, Boilers, Pharma, Chemical & Many Other Industries.

IATA Code: 14332860006
MTO No: MTO/DGS/2102/NOV/2025



Freight Forwarding & Chartering (Sea & Air)



Any Mode | Any Where | Any Dimension | Any Weight
LCL | FCL | ODC | Reefer | Coastal Shipping



Freight Forwarding & Chartering

We have vast experience in handling both Sea & Air freight forwarding across the globe. We customize the entire requirement with different combinations of Sea | Air ensuring - space allocation, fastest routing & transit time, frequency to suits your project schedule.


We charter Ship or Flight or book space for huge & heavy cargos globally. We do agency services of Vessel Handling at all Indian Seaports.

OUR SERVICES INCLUDE

General Cargo | Break-Bulk & Project Cargo
ODC (Flat Racks, Open Tops & Mafi)
Reefer | Perishable Cargo | Pharma | Medical Equipments
Second Hand Machinery | Chemical

Logistics Partner

Heavy Cargoes | OD Cargoes



We are experts in handling all types of transportation requirements according to the Size, Volume and Nature of cargo including Over Dimensional Cargoes. We arrange Route Surveys and Feasibility Report on request. Our vehicle covers right from Hydraulic Axles, Flat Bed, Low Bed and Semi-low bed, Long Trailers, Trucks and LCV which will be organised as per clients and project requirements.



Indian Banks' Association

IBA Approved Transporter

CIE - 1883

General Cargo & ODC Specialist





HYGIENE | COMFORT | SAFETY | PUNCTUALITY

Online
Booking



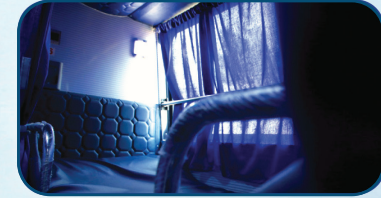
www.exceltravels.co.in

Passenger Carrier

Luxury and highly secured Passenger carrier with latest amenities operating in the Southern States of India.

Goods Consolidation

Consolidated parcel services with a highly committed level of safety within the stipulated time.



Excel Energy Systems Pvt Ltd.

(Process Cooling Systems)



Excel Energy Systems Pvt Ltd, is a Team of Professionals providing end-to-end solutions in Process Cooling Industrial Applications covering Design, Manufacture and Supply of customized Industrial Refrigeration Systems catering to cross segments industrial needs.

Our Primary focus is on the following Industrial Applications: Food Processing, Dairies and Large Cold Storage Applications Chemicals, Fine Chemicals and Fertilizers Liquefaction, Condensation, Storage Handling and Vapour Recovery Wind Energy, Solar Energy.

FOCUSED INDUSTRIES



Pharmaceuticals and Bulk Drugs



Solar Energy



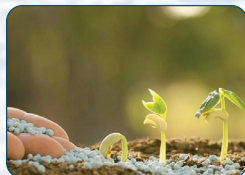
Wind Energy



Food Processing, Dairies and Large Cold Storage Applications



Liquefaction, Condensation, Storage Handling and Vapour Recovery



Chemicals, Fine Chemicals and Fertilizers



230 KV Substation, Karaikal - Civil Works

Excel Infra specializes in comprehensive engineering, design and consultancy services from concept to commissioning of the building and factory projects. The construction activities shall be leveraged with focus on adaptation & implementation of modern construction technologies and thereby improving efficiency and quality of construction.

Area of Focus in Civil, Electrical, Electronics and Communication

- Multi-Floor Apartments
- Commercial Buildings
- Interiors (Partition & False Ceiling)
- Landscaping
- Supply of Raw Materials
- Networking & Telecommunication
- CCTV Installation, Fixing & Configuration
- Maintenance and Service
- Renovation & Restoration of Water Bodies
- Internal Electrification of Commercial and Residential Apartments





www.beatsjobs.com

Job Portal & HR Solutions

Integrated Job Portal

Beatsjobs.com is the progressive Human Resource company, catering to all categories of work force requirement in the most professional and effective manner delivering excellent results on time, every time.

Job Portal

Our easy-to-use Online job portal provides a platform for Job seekers to register and apply to numerous job vacancies posted by employers.

Placement

Our quick Turn-Around Time, Quality Systems and processes along with our strong databank of 1.5 million + job seekers help us to provide qualified and suitable candidates as per the requirement of our clients.

Staffing

We provide you with staffing for a short or a long period of time. We take care of employee paper work, payroll and processing, taxes, insurance and others while you focus on your business.

Training

We provide training and motivational sessions at colleges and corporate to Motivate, Mentor and Bring out the best in you.

Zeal tne

Tours & Events



*Journey is as much important as the destination.
We make it all perfect...*

Zeal Tours & Events Pvt Ltd, is a Professional Travel Agency & Corporate Event Management company of EXCEL Group. We are Leading Outbound Tour Operating Company which provides all travel related services under one roof.

Our Services

Air Ticketing | Hotel Booking | Travel Insurance
Visa / Passport / Forex | Holiday Packages
Business Tours | Incentive Tours & MICE
Cruise Holidays | Group Tours
Corporate Events | TV Shows
Award Nights | Annual Day Celebrations

MD impex

Services



Warehousing

- ✦ Cold storage systems
- ✦ Open warehouses
- ✦ Bonded warehouses
- ✦ Storage Solutions for Project Cargoes

Trading

- ✦ Supply of Packing Materials
(Wooden Boxes, Pallets, Strips)
- ✦ Supply of Second Hand Containers
(Storage / Fabricated)
- ✦ Sale of Export Incentive Scrips
(MEIS / SEIS / RoDTEP)

Sri Balaji engineering



Sri Balaji Engineering founded in 2012 as our in-house fabrication unit to cater the customers requirement.

We do fabrications for

- ✦ Trucks & Trailers
- ✦ Buses
- ✦ Non pressure parts of Boilers
- ✦ Angles & Steel Saddles
- ✦ Wind mill towers & Many others

Empowering the Local Community



We work for the development of our local community through our CSR wing **"THE EXCEL FOUNDATION"**. The foundation strives for the welfare of youth, women & girl children empowerment, special children and senior citizens. Our foundation also supports aspiring sportspersons.



The Excel Foundation



Excel Maritime & Logistics Pvt Ltd has been awarded for Excellence & Outstanding work in the MSME sector by the Economic Times

Excel group



Contact Us

Corporate Office: Old No. 52, New No. 8, Dr. BN Road (Opp. Singapore Embassy), Chennai - 17 PH: +91 44 49166999 | +91 93827 50004 | +91 98409 68882

Registered Office: No: 26/7, Jaffar Sarang Street, Chennai - 600 001 PH: +91 44 49166775 | +91 95970 86258 | +91 93827 50001

Our Network

Chennai | Mumbai | Kolkatta | New Delhi | Coimbatore | Karur | Trichy | Tuticorin | Bengalaru | Ranipet | Hosur | Cochin
Ahmedabad | Aurangabad | Pune | Paradip | Haldia | Hyderabad | Vizag | Gangavaram | Krishnapattinam | Mundra | Kandla

Colombo | Singapore | Port Klang | Jakarta | Manila | Bangkok | Laem Chabang | Ho Chi Minh City | Hanoi | Shanghai
Dalian | Tianjin | Xiamen | Incheon | Busan | Kobe | Yokohoma | Tokyo | Jebel Ali | Vietnam | Combodia

www.excelgroup.co.in | excel@excelgroup.co.in

[in](#) [f](#) [t](#) [@](#) /excelgroup